

Schäffer



PRODUCT RANGE

2026/1



MADE FOR MORE.



MULTIFUNCTIONAL LOADERS

1422	4
14e	5



WHEEL LOADERS

2428-2	6
2428 SLT	7
2430-2	8
2430 SLT	9
24e	10
2445 S	11
4670 Z-2	12
5470 Z	13



TELESCOPIC WHEEL LOADERS

24e T	14
2630 T SLT	15
3650 T	16
3650 T SLT	17
4670 T-3	18
5680 T-3	19
6680 T-3	20
8620 T-2	21
8620 T-3	22
9640 T-3	23
9660 T-2	24



ATTACHMENTS

Buckets	26
Pallet forks	32
Farming and horse husbandry	33
Green area maintenance	39
Cleaning	42
Winter road maintenance	43
Special applications	44

Schäffer Maschinenfabrik GmbH

Auf den Thränen

D-59597 Erwitte

www.schaeffer.de/en

info@schaeffer.de

Tel.: +49 (0) 2943 9709-0

Fax: +49 (0) 2943 9709-50

PRODUCT RANGE 2026/I

NOTES

Optional equipment and tyre dimensions may vary operating weight and tipping loads. Tipping loads and parallel motion are not guaranteed when using a foreign headstock, e.g. EURO-WS.

All technical specifications in this brochure refer to serial models and describe their standard functions. The equipment components and their functions as well as the accessories depend on the individual model and the product options and also on the country and customer specific requirements (the maximum values for tipping loads and payloads can only be reached with additional ballasting).

Images may contain products or equipment components which are not mentioned or cannot be obtained as a standard. The descriptions, measurements, images, weight specifications and technical data correspond to the state of the art at the time of printing and are non-binding. We reserve changes in the field of construction, equipment, optics and technology without prior notice, due to the continuous development of the products. In case of doubts concerning the performance or the mode of operation of our products due to special circumstances, we recommend the execution of work samples under controlled conditions.

We cannot exclude deviations from images or measurements, calculation errors, printing errors or incompleteness in the prospectus despite all due care. We do therefore not accept any liability for the correctness and completeness of the specifications in this prospectus. We do guarantee the proper functioning of our products within the scope of our General Terms and Conditions. Any guarantees that go beyond these are on principle not provided. Any liability beyond the ones set out in our General Terms and Conditions is excluded.



TECHNICAL DATA

Width	890 - 1,060 mm
Height protection roof	1,990 mm
Lifting height (tool pivot)	2,230 mm
Length with standard bucket	3,050 mm
Turning radius inside	970 mm
Working weight	1,250 kg
Lifting capacity	810 kg

Tipping load straight, pallet fork*	600 kg
Tipping load straight, bucket*	800 kg
Speed	16 kph

* according to ISO 8313 (boom horizontal)

STANDARD EQUIPMENT

- 3-cylinder diesel engine Kubota D902, 16.2 kW (22 HP)
- Hydrostatic four wheel drive with foot pedal control
- Tyres 23x8.50-12 SKD, offset +60
- Genuine Schaffer axle; (5-hole)
- Combined oil cooler
- Drum brake as parking brake
- Maintenance free articulated pendulum joint
- Restraining system for protection roof
- Lighting system without ABE (General approval certificate) according to ordinance StVZO
- LED working headlights 2 x front, 1 x rear
- Parallel lift
- Mechanically operated additional controller
- Working hydraulics: 28 l/min
- Adjustable steering column
- Hour meter, fuel control lamp and temperature indicator
- Mechanical hand throttle
- Tool box
- Driver-on-board switch
- Quick-change frame SWH with hydraulic tool lock



TECHNICAL DATA

Width	890 - 1,060 mm
Height protection roof	1,990 mm
Lifting height (tool pivot)	2,230 mm
Length with standard bucket	3,050 mm
Turning radius inside	970 mm
Working weight	1,345 kg
Lifting capacity	810 kg

Tipping load straight, pallet fork*	630 kg
Tipping load straight, bucket*	850 kg
Speed	16 kph

* according to ISO 8313 (boom horizontal)

STANDARD EQUIPMENT

- Electric motor 9.6 kW
- Hydrostatic four wheel drive with automotive control
- Li-Ion battery pack, 48 V / 12.2 kWh
- On-board charger with Type 2 connector enables charging at a 230V power outlet or a wallbox
- Charging cable type 2 / CEE 16A, 4 m
- Battery management system
- Energy recuperation
- Eco mode to extend the operating time
- Tyres 23x8.5-12 SKD, offset +60
- Genuine Schaffer axle; (5-hole)
- Hydraulic oil cooler
- Drum brake as parking brake
- Maintenance free articulated pendulum joint
- Restraining system for protection roof
- LED working headlights 2 x front, 1 x rear
- LED-Lighting system without ABE (General approval certificate) according to ordinance StVZO
- Parallel lift
- Mechanically operated additional controller
- Silence gear pump, especially quiet
- Working hydraulics: 28 l/min
- Adjustable steering column
- Hour meter and charging status display
- Tool Box
- Driver-on-board switch
- Quick-change frame SWH with hydraulic tool lock



TECHNICAL DATA

Width	940 - 1,250 mm
Height protection roof	2,100 mm
Lifting height (tool pivot)	2,300 mm
Length with standard bucket	3,780 mm
Turning radius inside	860 mm
Working weight	1,820 kg

Lifting capacity	1,700 kg
Tipping load straight, pallet fork*	1,046 - 1,222 kg
Tipping load straight, bucket*	1,218 - 1,354 kg
Speed	15 kph

* according to ISO 8313 (boom horizontal)

STANDARD EQUIPMENT

- 3-cylinder diesel engine Kubota D1105, 18.5 kW (25 HP)
- Low version front carriage for best lifting force
- Hydrostatic four wheel drive with automotive control
- Tyres 27x8.50-15 SKD offset +30 incl. reversable rims
- SPT (Schäffer Power Transmission)
- Genuine Schäffer axle; (5-hole)
- Combined oil cooler
- Drum brake as service and parking brake
- Maintenance free articulated pendulum joint
- Restraining system for protection roof
- LED working headlights 2 x front, 1 x rear
- Lighting system without ABE (General approval certificate) according to ordinance StVZO
- Parallel lift
- Mechanically operated additional controller
- Working hydraulics standard/option: 33/ 42 l/min.
- Adjustable steering column
- Hour meter, fuel control lamp and temperature indicator
- Case weight
- Rear weight end plate
- Tool Box
- Driver-on-board switch
- Quick-change frame SWH with hydraulic tool lock



TECHNICAL DATA

Width	940 - 1,250 mm
Height protection roof	1,920 mm
Height cabin	1,920 mm
Lifting height (tool pivot)	2,300 mm
Length with standard bucket	3,950 mm
Turning radius inside	1,495 mm
Working weight	1,860 kg / 1,960 kg with cab

Lifting capacity	1,700 kg
Tipping load straight, pallet fork*	1,185 - 1,311 kg
Tipping load straight, bucket*	1,550 - 1,663 kg
Speed	15 kph

* according to ISO 8313 (boom horizontal)

STANDARD EQUIPMENT

- Special low construction design
- 3-cylinder diesel engine Kubota D1105, 18.5 kW (25 HP)
- Low version front carriage for best lifting force
- Hydrostatic four wheel drive with automotive control
- Tyres 27x8.50-15 SKD offset +30 incl. reversable rims
- Genuine Schäffer axle; (5-hole)
- Combined oil cooler
- Drum brake as service and parking brake
- Maintenance free articulated pendulum joint
- Restraining system for protection roof
- LED working headlights 2 x front, 1 x rear
- Lighting system without ABE (General approval certificate) according to ordinance StVZO
- Parallel lift
- Mechanically operated additional controller
- Working hydraulics standard/option: 33/ 42 l/min.
- Adjustable steering column
- Hour meter, fuel control lamp and temperature indicator
- Case weight
- Rear weight end plate
- Tool Box
- Quick-change frame SWH with hydraulic tool lock



TECHNICAL DATA

Width	1,200 - 1,590 mm	Lifting capacity	1,900 kg
Height protection roof	2,230 mm	Tipping load straight, pallet fork*	1,745 - 1,965 kg
Height cabin	2,180 mm	Tipping load straight, bucket*	2,160 - 2,560 kg
Lifting height (tool pivot)	2,500 mm	Speed	20 kph
Length with standard bucket	4,230 mm	* according to ISO 8313 (boom horizontal)	
Turning radius inside	1,390 mm		
Working weight	2,320 kg / 2,550 kg with cab		

STANDARD EQUIPMENT

- 3-cylinder diesel engine Kubota D1703-M-Di, 18.5 kW (25 HP)
- Low version front carriage for best lifting force
- Highest torque due to 1.7 l cylinder capacity
- Hydrostatic four wheel drive with cardan shaft and automotive control
- High-pressure drive HD-plus
- Tyres 10.0/75-15.3 MPT, offset -40
- HTF (High Traction Force)
- SPT (Schäffer Power Transmission)
- Hydraulic quick gear 20 kph
- Genuine Schäffer axle; (6-hole)
- Combined oil cooler
- Multiple disk brake, maintenance free; service and parking brake
- Maintenance free articulated pendulum joint
- Restraining system for protection roof
- LED working headlights 2 x front, 1 x rear
- Lighting system without ABE (General approval certificate) according to ordinance StVZO
- Parallel lift
- Mechanically operated additional controller
- Working hydraulics: 42 l/min
- Adjustable steering column
- Hour meter, fuel control lamp and temperature indicator
- Rear weight end plate
- Tool box
- Driver-on-board switch
- Quick-change frame SWH with hydraulic tool lock



TECHNICAL DATA

Width	1,020 - 1,300 mm	Lifting capacity	1,900 kg
Height protection roof	1,960 mm	Tipping load straight, pallet fork*	1,733 - 1,954 kg
Height cabin	1,960 mm	Tipping load straight, bucket*	1,820 - 2,135 kg
Lifting height (tool pivot)	2,500 mm	Speed	20 kph
Length with standard bucket	4,200 mm	* according to ISO 8313 (boom horizontal)	
Turning radius inside	1,560 mm		
Working weight	2,480 kg / 2,555 kg with cab		

STANDARD EQUIPMENT

- Special low construction design
- 3-cylinder diesel engine Kubota D1703-M-Di, 18.5 kW (25 HP)
- Hydraulic four wheel drive with cardan shaft and automotive control
- High-pressure drive HD-plus
- Tyres 10.0/75-15.3 SKD, offset +40
- HTF (High Traction Force)
- SPT (Schäffer Power Transmission)
- Hydraulic quick gear 20 kph
- Genuine Schäffer axle; (6-hole)
- Combined oil cooler
- Multiple disk brake, maintenance free; service and parking brake
- Maintenance free articulated pendulum joint
- Restraining system for protection roof
- LED working headlights 2 x front, 1 x rear
- Lighting system without ABE (General approval certificate) according to ordinance StVZO
- Parallel lift
- Mechanically operated additional controller
- Working hydraulics: 42 l/min
- Adjustable steering column
- Hour meter, fuel control lamp and temperature indicator
- Counter weight 100 kg mounted under rear chassis
- Rear weight end plate
- Tool Box
- Driver-on-board switch
- Quick-change frame SWH with hydraulic tool lock



TECHNICAL DATA

Available battery capacity	15.65 / 31.3 kWh
Width	1,020 - 1,570 mm
Height protection roof	2,190 mm
Height cabin	2,140 mm
Lifting height (tool pivot)	2,500 mm
Length with standard bucket	4,045 mm
Turning radius inside	1,310 mm

Working weight	2,290 kg / 2,355 kg with cab
Lifting capacity	1,900 kg
Tipping load straight, pallet fork*	1,610 - 1,749 kg
Tipping load straight, bucket*	1,690 - 1,935 kg
Speed	20 kph

* according to ISO 8313 (boom horizontal)

STANDARD EQUIPMENT

- Electric motor drive: 21 kW; electric motor working hydraulics: 9.7 kW
- Low version front carriage for best lifting force
- Electric four wheel drive with cardan shaft
- Li-Ion battery pack, 240 V / 15.65 kWh (31.3 kWh on option)
- On-board charger with Type 2 connector enables charging at a 230V power outlet or a wallbox
- Charging cable type 2 / CEE 16 A, 4 m
- Battery management system
- Energy recuperation
- Hill-Hold funktion: 'start up assistant' to make hill starts easier
- Tyres 10.0/75-15.3 MPT, offset +40
- 20 kph
- Eco mode to extend the operating time
- Genuine Schaeffer axle; (6-hole)
- Water cooling of electric motors
- Multiple disk brake, maintenance free; service and parking brake
- Maintenance free articulated pendulum joint
- Restraining system for protection roof
- LED working headlights 2 x front, 1 x rear
- LED lighting system without ABE (General approval certificate) according to ordinance StVZO
- Acoustic reverse warning signal (can be switched off)
- Parallel lift
- Electronically operated additional controller
- SilencePlus gear pump, especially quiet
- Working hydraulics: 42 l/min
- Adjustable steering column
- Hour meter and charging status display
- Counter weight 100 kg mounted under rear chassis
- Rear weight end plate
- Main battery switch
- Tool box
- Driver-on-board switch
- Quick-change frame SWH with hydraulic tool lock



TECHNICAL DATA

Width	1,100 - 1,520 mm
Height protection roof	2,230 mm
Height cabin	2,180 mm
Lifting height (tool pivot)	2,500 mm
Length with standard bucket	4,330 mm
Turning radius inside	1,490 mm
Working weight	2,500 kg / 2,700 kg with cab

Lifting capacity	1,900 kg
Tipping load straight, pallet fork**	1,830 - 2,035 kg
Tipping load straight, bucket**	2,420 - 2,660 kg
Speed	20 kph, Option: 30 kph

* optional

** according to ISO 8313 (boom horizontal)

STANDARD EQUIPMENT

- 3-cylinder diesel engine Kubota D1803-CR-T, 37 kW (50 HP)
- DOC and DPF for compliance with Stage V emissions standards
- Low version front carriage for best lifting force
- Hydrostatic four wheel drive with automotive control
- Tyres 10.0/75-15.3 MPT, offset -40
- HTF (High Traction Force)
- SPT (Schaeffer Power Transmission)
- ECO Mode
- Hydraulic quick gear 20 kph switchable under load
- Genuine Schaeffer axle; (6-hole)
- Combined oil cooler
- Multiple disk brake, maintenance free; service and parking brake
- Maintenance free articulated pendulum joint
- Restraining system for protection roof
- LED working headlights 2 x front, 1 x rear
- Lighting system without ABE (General approval certificate) according to ordinance StVZO
- Parallel lift
- Working hydraulics standard/option: 51 / 81 l/min (MHF)
- Adjustable steering column
- Hour meter, fuel control lamp and temperature indicator
- Rear weight end plate
- Tool Box
- Driver-on-board switch
- Quick-change frame SWH with hydraulic tool lock

4670 Z-2



TECHNICAL DATA

Width	1,420 - 1,730 mm
Height protection roof	2,270 mm
Height cabin	2,270 mm
Lifting height (tool pivot)	3,260 mm
Length with standard bucket	4,760 mm
Turning radius inside	1,425 mm
Working weight	3,400 - 3,520 kg with cab
Lifting capacity	2,400 kg

Tipping load straight, pallet fork**	1,823 - 2,149 kg
Tipping load straight, bucket**	2,120 - 2,428 kg
Speed	20 kph Option 30 kph

* optional
** according to ISO 8313 (boom horizontal)

STANDARD EQUIPMENT

- 4-cylinder diesel engine Kubota V2403-CR-T, 48.6 kW (66 HP)
- DOC and DPF for compliance with Stage V emissions standards
- Hydrostatic four wheel drive with automotive control
- High-pressure drive HD-plus
- Tyres 11.5/80-15.3 AS, offset +40
- HTF (High Traction Force)
- SPT (Schäffer Power Transmission)
- ECO Mode
- Hydraulic quick gear 20 kph switchable under load
- HD planetary axles with self-locking differentials, Wide design; (6-hole)
- Combined oil cooler
- Multiple disk brake, maintenance free; service and parking brake
- Maintenance free articulated pendulum joint
- Restraining system for protection roof
- LED working headlights 2 x front, 1 x rear
- Z-bar boom with parallel lift
- Electronically operated additional controller switchable on joystick
- Working hydraulics standard / options: 76 / 70 + 70 (double gear pump) 108 l/min MHF
- Adjustable steering column
- Hour meter, rev counter, fuel and temperature indicator
- Armrest right hand side
- Rear weight end plate
- Main battery switch (cab version)
- Wide chassis
- Driver-on-board switch
- Headstock type wheel loader with hydraulic tool lock

5470 Z



TECHNICAL DATA

Width	1,740 - 1,820 mm
Height cabin / optional	2,570 / 2,510 mm
Lifting height (tool pivot)	3,250 mm
Length with standard bucket	5,250 mm
Turning radius inside	1,560 mm
Working weight	5,215 kg
Lifting capacity	3,600 kg

Tipping load straight, pallet fork**	2,935 kg
Tipping load straight, bucket**	3,530 kg
Speed	20 kph Option: 30 kph

* optional
** according to ISO 8313 (boom horizontal)

STANDARD EQUIPMENT

- 4-cylinder diesel engine Deutz TD 2.9, 45 kW (61 HP) / 55 kW (75 HP)
- DOC and DPF for compliance with Stage V emissions standards
- Hydrostatic four wheel drive with automotive control
- High-pressure drive HD-plus
- Tyres 400/70R18 A608, offset +40
- HTF (High Traction Force)
- SPT (Schäffer Power Transmission)
- ECO Mode
- Hydraulic quick gear 20 kph switchable under load
- HD planetary axles with self-locking differentials; (8-hole)
- Rear pendulum axle
- Combined oil cooler
- Hydraulic fan drive
- Multiple disk brake, maintenance free; service and parking brake
- Maintenance free articulation joint
- LED working headlights 2 x front, 1 x rear
- Lighting system without ABE (General approval certificate) according to ordinance StVZO
- Z-bar boom with parallel lift
- Electronically operated additional controller switchable on joystick
- Working hydraulics standard/option: 64 / 76 l / 115 l/min (MHF)
- Adjustable steering column
- Hour meter, rev counter, fuel and temperature indicator
- Armrest right hand side
- Counter weight 380 kg mounted under rear chassis
- Rear weight end plate and towing hitch
- Main battery switch
- 2-stage air cleaner with highly efficient pre-cleaner system
- Driver-on-board switch
- Headstock type VL1 with hydraulic tool lock



TECHNICAL DATA

Available battery capacity	31.3 kWh
Width	1,410 - 1,590 mm
Height protection roof	2,190 mm
Height cabin	2,140 mm
Lifting height (tool pivot)	3,720 mm
Length with standard bucket	4,700 mm
Turning radius inside	1,150 mm

STANDARD EQUIPMENT

- Electric motor drive: 21 kW; electric motor working hydraulics: 9.7 kW
- Electric four wheel drive with cardan shaft
- Li-Ion battery pack, 240 V / 31.3 kWh
- On-board charger with Type 2 connector enables charging at a 230V power outlet or a wallbox
- Charging cable type 2 / CEE 16 A, 4 m
- Battery management system
- Energy recuperation
- Hill-Hold funktion: 'start up assistant' to make hill starts easier
- Tyres 31x15.5-15 SKD, offset 0
- 20 kph
- Eco mode to extend the operating time
- Original Schäffer axles, wide design
- Ferro-form sliding elements in the telescopic arm
- Tool cylinder in the telescopic arm
- Pressure relief 3rd control circuit electrically
- Water cooling of electric motors
- Multiple disk brake, maintenance free; service and parking brake
- Maintenance free articulated pendulum joint
- Restraining system for protection roof
- LED working headlights 2 x front, 1 x rear
- LED lighting system without ABE (General approval certificate) according to ordinance StVZO
- Acoustic reverse warning signal (can be switched off)
- Z-bar boom with parallel lift
- Electronically operated additional controller
- Working hydraulics: 42 l/min
- Adjustable steering column
- Hour meter and charging status display
- Counter weight 100 kg mounted under rear chassis
- Rear weight end plate and towing hitch
- Main battery switch
- Wide chassis with wider fender
- Tool box
- Driver-on-board switch
- Quick-change frame SWH with hydraulic tool lock



TECHNICAL DATA

Width	1,410 - 1,590 mm
Height protection roof	1,980 mm
Height cabin	1,980 mm
Lifting height (tool pivot)	3,720 mm
Length with standard bucket	4,600 mm
Turning radius inside	1,240 mm

STANDARD EQUIPMENT

- Special low construction design
- 3-cylinder diesel engine Kubota D1703-M-Di, 18.5 kW (25 HP)
- Hydrostatic four wheel drive with cardan shaft and automatic control
- High-pressure drive HD-plus
- Tyres 31x15.5-15 AS, offset 0
- HTF (High Traction Force)
- SPT (Schäffer Power Transmission)
- Hydraulic quick gear 20 kph
- Original Schäffer axles, wide design; (6-hole)
- Ferro-form sliding elements in the telescopic arm
- Tool cylinder in the telescopic arm
- Pressure relief 3rd control circuit electrically
- Combined oil cooler
- Multiple disk brake, maintenance free; service and parking brake
- Maintenance free articulated pendulum joint
- Restraining system for protection roof
- LED working headlights 2 x front, 1 x rear
- Z-bar boom with parallel lift
- Mechanically operated additional controller
- Working hydraulics: 38 l/min.
- Adjustable steering column
- Hour meter, rev counter, fuel control lamp and temperature indicator
- Rear weight end plate and towing hitch
- Counter weight 110 kg mounted under rear chassis
- Wide chassis with wider fender
- Driver-on-board switch
- Quick-change frame SWH with hydraulic tool lock

Working weight	2,750 kg / 2,815 kg with cab
Lifting capacity	1,600 kg
Tipping load straight, pallet fork*	1,330 kg
Speed	20 kph

* Boom horizontal, not extended, with pallet fork (acc. to ISO 14397)

3650 T

HTF 

SPT 

eco
Mode 



TECHNICAL DATA

Width	1,420 - 1,730 mm
Height protection roof	2,290 mm
Height cabin	2,210 mm
Lifting height (tool pivot)	3,850 mm
Length with standard bucket	4,735 mm
Turning radius inside	1,290 mm

Working weight	3,600 kg / 3,800 kg with cab
Lifting capacity	1,950 kg
Tipping load straight*	1,710 kg
Speed	20 kph Option: 30 kph

* Boom horizontal, not extended, with pallet fork (acc. to ISO 14397)

STANDARD EQUIPMENT

- 3-cylinders diesel engine Kubota D1803-CR-T(I), 37 kW (50 HP) / 42 kW (58 HP)
- DOC and DPF for compliance with Stage V emissions standards
- Hydrostatic four wheel drive with automotive control
- High-pressure drive HD-plus
- Tyres 15.0/55-17 AS, offset +85
- HTF (High Traction Force)
- SPT (Schäffer Power Transmission)
- ECO Mode
- Hydraulic quick gear 20 kph switchable under load
- Genuine Schäffer axle, Wide design; (6-hole)
- Ferro-form sliding elements in the telescopic arm
- Tool cylinder in the telescopic arm
- Pressure relief 3rd control circuit electrically
- Combined oil cooler
- Multiple disk brake, maintenance free; service and parking brake
- Maintenance free articulated pendulum joint
- Restraining system for protection roof
- LED working headlights 2 x front, 1 x rear
- Z-bar boom with parallel lift
- Mechanically operated additional controller
- Working hydraulics Serie / Option: 51 / 60 V/min
- Adjustable steering column
- Hour meter, rev counter, fuel and temperature indicator
- Rear weight end plate and towing hitch
- Counter weight 110 kg mounted under rear chassis
- Wide chassis
- Driver-on-board switch
- Headstock type wheel loader with hydraulic tool lock

3650 T SLT

HTF 

SPT 

eco
Mode 



TECHNICAL DATA

Width	1,420 - 1,730 mm
Height protection roof	2,100 mm
Lifting height (tool pivot)	3,850 mm
Length with standard bucket	4,735 mm
Turning radius inside	1,290 mm
Working weight	3,700 kg

Lifting capacity	1,950 kg
Tipping load straight, pallet fork*	1,710 kg
Speed	20 kph Option: 30 kph

* Boom horizontal, not extended, with pallet fork (acc. to ISO 14397)

STANDARD EQUIPMENT

- Special low construction design
- 3-cylinders diesel engine Kubota D1803-CR-T, 37 kW (50 HP)
- DOC and DPF for compliance with Stage V emissions standards
- Hydrostatic four wheel drive with automotive control
- High-pressure drive HD-plus
- Tyres 15.0/55-17 AS, offset +85
- HTF (High Traction Force)
- SPT (Schäffer Power Transmission)
- ECO Mode
- Hydraulic quick gear 20 kph switchable under load
- Genuine Schäffer axle, Wide design; (6-hole)
- Ferro-form sliding elements in the telescopic arm
- Tool cylinder in the telescopic arm
- Pressure relief 3rd control circuit electrically
- Combined oil cooler
- Multiple disk brake, maintenance free; service and parking brake
- Maintenance free articulated pendulum joint
- Restraining system for protection roof
- LED working headlights 2 x front, 1 x rear
- Z-bar boom with parallel lift
- Mechanically operated additional controller
- Working hydraulics: 51 l/min
- Adjustable steering column
- Hour meter, rev counter, fuel and temperature indicator
- Rear weight end plate and towing hitch
- Counter weight 110 kg mounted under rear chassis
- Wide chassis
- Driver-on-board switch
- Headstock type wheel loader with hydraulic tool lock

4670 T-3



TECHNICAL DATA

Width	1,420 - 1,730 mm
Height protection roof	2,270 mm
Height cabin	2,270 mm
Lifting height (tool pivot)	4,300 mm
Length with standard bucket	4,930 mm
Turning radius inside	1,425 mm
Working weight	3,900 - 4,000 kg with cab

STANDARD EQUIPMENT

- 4-cylinder diesel engine Kubota V2403-CR-T, 48.6 kW (66 HP)
- DOC and DPF for compliance with Stage V emissions standards
- Hydrostatic four wheel drive with automotive control
- High-pressure drive HD-plus
- Tyres 15.0/55-17 AS, offset +45
- HTF (High Traction Force)
- SPT (Schäffer Power Transmission)
- ECO Mode
- Hydraulic quick gear 20 kph switchable under load
- HD planetary axles with self-locking differentials, wide design; (6-hole)
- Ferro-form sliding elements in the telescopic arm
- Tool cylinder in the telescopic arm
- Electric pressure relief of hydraulic couplings (on the steering tower and telescopic arm)
- Load moment control according to DIN EN474-3
- Combined oil cooler

Lifting capacity	2,400 kg
Tipping load straight*	2,110 kg
Speed	20 kph Option 30 kph

* Boom horizontal, not extended, with pallet fork (acc. to ISO 14397)

- Multiple disk brake, maintenance free; service and parking brake
- Maintenance free articulated pendulum joint
- Restraining system for protection roof
- LED working headlights 2 x front, 1 x rear
- Z-bar boom with parallel lift
- Mechanically operated additional controller
- Working hydraulics standard / options: 60 / 70 (stronger pump) / 70 + 70 (double gear pump)
- Adjustable steering column
- Hour meter, rev, counter, fuel control lamp and temperature indicator
- Armrest right hand side
- Rear weight end plate and towing hitch
- Main battery switch (cab version)
- Counter weight 170 kg mounted under rear chassis
- Wide chassis
- Driver-on-board switch
- Headstock type wheel loader with hydraulic tool lock

5680 T-3



TECHNICAL DATA

Width	1,720 - 1,820 mm
Height cabin / optional	2,530 / 2,470 mm
Lifting height (tool pivot)	4,740 mm
Length with standard bucket	5,432 mm
Turning radius inside	1,740 mm
Working weight	4,840 kg
Lifting capacity	2,400 kg

Tipping load straight*	2,660 kg
Speed	20 kph Option 30 kph

* Boom horizontal, not extended, with pallet fork (acc. to ISO 14397)

STANDARD EQUIPMENT

- 4-cylinder diesel engine Deutz TD 2.9, 55 kW (75 HP)
- DOC and DPF for compliance with Stage V emissions standards
- Hydrostatic four wheel drive with automotive control
- High-pressure drive HD-plus
- Tyres 15.5/60-18 AT-621, offset +40
- HTF (High Traction Force)
- SPT (Schäffer Power Transmission)
- ECO Mode
- Hydraulic quick gear 20 kph switchable under load
- HD planetary axles with self-locking differentials; (8-hole)
- Rear pendulum axle
- Ferro-form sliding elements in the telescopic arm
- Tool cylinder in the telescopic arm
- Electric pressure relief of hydraulic couplings (on the steering tower and telescopic arm)
- Load moment control according to DIN EN474-3
- Combined oil cooler
- Hydraulic fan drive

- Multiple disk brake, maintenance free; service and parking brake
- Maintenance free articulation joint
- LED working headlights 2 x front, 1 x rear
- Lighting system without ABE (General approval certificate) according to ordinance StVZO
- Z-bar boom with parallel lift
- Proportional control of the auxiliary connections and telescoping function on the joystick
- Working hydraulics standard / option: 64 / 76 l/min
- Depressurised return
- Adjustable steering column
- Hour meter, rev, counter, fuel control lamp and temperature indicator
- Armrest right hand side
- Rear weight end plate and towing hitch
- Counter weight 224 kg mounted under rear chassis
- Main battery switch
- 2-stage air cleaner with highly efficient pre-cleaner system
- Driver-on-board switch
- Headstock type wheel loader with hydraulic tool lock

6680 T-3



TECHNICAL DATA

Width	1,840 - 2,090 mm
Height cabin / optional	2,630 / 2,530 mm
Lifting height (tool pivot)	4,950 mm
Length with standard bucket	5,780 mm
Turning radius inside	1,960 mm
Working weight	5,800 - 6,300 kg
Lifting capacity	3,100 kg

Tipping load straight, pallet fork**	3,820 kg
Speed	20 kph Option: 40 kph*

* 40 kph version incl. boom suspension

** Boom horizontal. not extended. with pallet fork (acc. to ISO 14397)

STANDARD EQUIPMENT

- 4-cylinder diesel engine Deutz TCD 2.9, 55 kW (75 HP)
- DOC and DPF for compliance with Stage V emissions standards
- Hydrostatic four wheel drive with automotive control
- High-pressure drive HD-plus
- Tyres 400/70-20 AS, offset -50
- HTF (High Traction Force)
- SPT (Schäffer Power Transmission)
- ECO Mode
- Hydraulic quick gear 20 kph / 40 kph including shock absorber switchable under load
- HD planetary axles with self-locking differentials; (8-hole)
- Rear pendulum axle
- Ferro-form sliding elements in the telescopic arm
- Tool cylinder in the telescopic arm
- Electric pressure relief of hydraulic couplings (on the steering tower and telescopic arm)
- Load moment control according to DIN EN474-3
- Combined oil cooler
- Hydraulic fan drive
- SCV-Plus-Cabin (Silence, Comfort, View)
- Multiple disk brake, maintenance free; service and parking brake
- Maintenance free articulation joint
- LED working headlights 2 x front, 1 x rear
- Lighting system without ABE (General approval certificate) according to ordinance StVZO
- Z-bar boom with parallel lift
- Proportional control of the auxiliary connections and telescoping function on the joystick
- Working hydraulics standard / options: 76 / 88 (Flow Sharing) / 104 l/min (Load Sensing)
- Depressurised return
- Steering column adjustable in length and angle
- Hour meter, rev. counter, fuel control lamp and temperature indicator
- Adjustable armrest
- Rear weight end plate and towing hitch
- Main battery switch
- 2-stage air cleaner with highly efficient pre-cleaner system
- Headstock type wheel loader with hydraulic tool lock

8620 T-2



TECHNICAL DATA

Width	2,060 - 2,260 mm
Height cabin / optional	2,770 / 2,670 mm
Lifting height (tool pivot)	5,200 mm
Length with standard bucket	6,031 mm
Turning radius inside	2,310 mm
Working weight	7,050 - 7,950 kg
Lifting capacity	4,200 kg

Tipping load straight, pallet fork.**	5,480 kg
Speed	20 kph Option: 40 kph*

* 40 kph version incl. boom suspension and ECO Mode (only for 95 kW = 129 HP)

** Boom horizontal. not extended. with pallet fork (acc. to ISO 14397)

STANDARD EQUIPMENT

- 4-cylinder diesel engine Deutz TCD 3.6, 75 kW (102 HP) / 95 kW (129 HP)
- DOC, DPF and SCR for compliance with Stage V emissions standards
- Hydrostatic four wheel drive with automotive control
- High-pressure drive HD-plus
- Tyres 18-22.5 MP590, offset 0
- HTF (High Traction Force)
- SPT (Schäffer Power Transmission)
- ECO Mode
- Hydraulic quick gear 20 kph switchable under load
- Flow sharing working hydraulics, 106 l/min, proportional control of the telescopic arm, options: 125 or 145 l/min (Load Sensing)
- Planetary axles HD with limited slip differentials; (10-hole)
- Rear pendulum axle
- Ferro-form sliding elements in the telescopic arm
- Tool cylinder in the telescopic arm
- Electric pressure relief of hydraulic couplings
- Load moment control according to DIN474-3
- Combined oil cooler
- Hydraulic fan drive
- SCV-Plus-Cabin (Silence, Comfort, View)
- Multiple disk brake, maintenance free; service and parking brake
- Maintenance free articulation joint
- 2 steering cylinders
- LED working headlights 2 x front, 1 x rear
- Lighting system without ABE (General approval certificate) according to ordinance StVZO
- Z-bar boom with parallel lift
- Additional control device electrically switchable on joystick
- Depressurised return
- Steering column adjustable in length and angle
- Operating hours meter, rev counter, fuel and temperature gauge, engine monitoring
- Adjustable armrest
- Rear weight end plate and towing hitch
- Main battery switch
- 2-stage air cleaner with highly efficient pre-cleaner system
- Driver-on-board switch
- Headstock type wheel loader with hydraulic tool lock

8620 T-3



TECHNICAL DATA

Width	2,060 - 2,260 mm
Height cabin	2,770 mm
Lifting height (tool pivot)	5,200 mm
Length with standard bucket	6,031 mm
Turning radius inside	2,310
Working weight	7,050 - 7,950 kg
Lifting capacity	4,200 kg

Tipping load straight, pallet fork**	5,480 kg
Speed	20 kph Option 40 kph*

* 40 kph version incl. boom suspension and ECO Mode (only for 95 kW = 129 HP)

** Boom horizontal, not extended, with pallet fork (acc. to ISO 14397)

STANDARD EQUIPMENT

- 4-cylinder diesel engine Deutz TCD 3.6, 75 kW (102 HP) / 95 kW (129 HP)
- DOC, DPF and SCR for compliance with Stage V emissions standard
- ECO Mode
- Combined oil cooler with hydraulic fan drive
- 2-stage air cleaner with highly efficient pre-cleaner system
- Hydrostatic four wheel drive with automotive control
- High-pressure drive HD-plus
- Tyres 18-22.5 AS MP590, offset 0
- HTF (High Traction Force), SPT (Schäffer Power Transmission)
- Planetary axles HD with limited slip differentials; (10-hole)
- Multiple disk brake, maintenance free; service and parking brake
- Maintenance free articulation joint, 2 steering cylinders, rear pendulum axle
- Z-bar boom with parallel lift
- Ferro-form sliding elements in the telescopic arm
- Headstock type wheel loader with hydraulic tool lock
- Comfort Cab PLUS
- 10" touch screen, mobile phone holder
- Radio preparation
- Electronic SRS joystick (aggressive, smooth)
- Selectable user profiles of the working hydraulics (fast, medium, slow)
- Steering column adjustable in height and tilt by foot pedal
- LED working headlights 2 x front, 1 x rear
- Lighting system without ABE (General approval certificate) according to ordinance StVZO
- Sockets: USB-A and USB-C, 3-pin Euro, 12 V vehicle
- Soft touch operating station for working lights and windscreen wipers
- Rear window heater
- Wide-angle and close-up mirrors
- Working hydraulics standard/options: 106 / 125 (stronger pump) / 172 l/min (Load Sensing)
- Dynamic load moment control according to DIN EN474-3
- Additional control unit can be operated electro-proportionally using the joystick
- Electric locking latch for additional control unit on both sides
- Switchable end-position cushioning of the cylinders (stroke, tool, tele)
- Pressure relief 3rd control circuit electrically
- Depressurised return

9640 T-3



TECHNICAL DATA

Width	2,330 - 2,380 mm
Height cabin	2,830 mm
Lifting height (tool pivot)	5,400 mm
Length with standard bucket	6,260 mm
Turning radius inside	2,220 mm
Working weight	8,400 - 9,700 kg
Lifting capacity	4,200 kg

Tipping load straight, pallet fork***	5,940 kg
Speed	20 kph Option 40 kph**

* optional

** 40 kph version incl. boom suspension, SPT, SDCT and ECO Mode

*** Boom horizontal, not extended, with pallet fork (acc. to ISO 14397)

STANDARD EQUIPMENT

- 4-cylinder diesel engine Deutz TCD 3.6, 105 kW (143 HP)
- DOC, DPF and SCR for compliance with Stage V emissions standard
- Combined oil cooler with hydraulic fan drive
- 2-stage air cleaner with highly efficient pre-cleaner system
- Hydrostatic four wheel drive with automotive control
- High-pressure drive HD-plus
- Tyres 460/70R24 AS, offset -50
- HTF (High Traction Force)
- Planetary axles HD with limited slip differentials; (10-hole)
- Multiple disk brake, maintenance free; service and parking brake
- Maintenance free articulation joint, 2 steering cylinders, rear pendulum axle
- Z-bar boom with parallel lift
- Ferro-form sliding elements in the telescopic arm
- Headstock type wheel loader with hydraulic tool lock
- Comfort Cab PLUS
- 10" touch screen, mobile phone holder
- Radio preparation
- Electronic SRS joystick (aggressive, smooth)
- Selectable user profiles of the working hydraulics (fast, medium, slow)
- Steering column adjustable in height and tilt by foot pedal
- LED working headlights 2 x front, 1 x rear
- Lighting system without ABE (General approval certificate) according to ordinance StVZO
- Sockets: USB-A and USB-C, 3-pin Euro, 12 V vehicle
- Soft touch operating station for working lights and windscreen wipers
- Rear window heater
- Wide-angle and close-up mirrors
- Flow Sharing Working hydraulics incl. proportional control of the telescopic arm
- Load-Sensing Working hydraulics, 172 l/min
- Dynamic load moment control according to DIN EN474-3
- Additional control unit can be operated electro-proportionally using the joystick
- Electric locking latch for additional control unit on both sides
- Switchable end-position cushioning of the cylinders (stroke, tool, tele)
- Pressure relief 3rd control circuit electrically
- Depressurised return



TECHNICAL DATA

Width	2,290 - 2,490 mm
Height cabin	2,900 mm
Lifting height (tool pivot)	6,100 mm
Length with standard bucket	6,950 mm
Turning radius inside	2,910 mm
Working weight	11,000 - 13,000 kg
Lifting capacity	5,300 kg

Tipping load straight, pallet fork***	7,700 kg
Speed	30 kph (20 kph) Option: 40 kph**

* optional

** 40 kph version incl. boom suspension, SPT, SDCT and ECO Mode

*** Boom horizontal, not extended, with pallet fork (acc. to ISO 14397)

STANDARD EQUIPMENT

- 4-cylinders diesel engine Deutz TCD 5.2, 130 kW (177 HP) / 150 kW (204 HP)
- DOC, DPF and SCR for compliance with Stage V emissions standard
- Hydrostatic four wheel drive with automotive control
- High-pressure drive HD-plus
- Tyres 500/70R24 AS, offset 0
- HTF (High Traction Force)
- Hydraulic quick gear 30 or 40 kph switchable under load
- Working hydraulics Load Sensing 196 l/min. (130 kW) / 230 l/min. (150 kW)
- Flow-Sharing-Working hydraulics incl. proportionale Steuerung des Teleskoparms
- Planetary axles HD with limited slip differentials; (10-hole)
- Rear pendulum axle
- Ferro-form sliding elements in the telescopic arm
- Tool cylinder in the telescopic arm
- Electric pressure relief of hydraulic couplings
- Combined oil cooler
- Hydraulic fan drive
- SCV-Plus-Cabin (Silence, Comfort, View)
- Multiple disk brake, maintenance free; service and parking brake
- Maintenance free articulation joint
- 2 steering cylinders
- LED working headlights 2 x front, 1 x rear
- Lighting system without ABE (General approval certificate) according to ordinance StVZO
- Z-bar boom with parallel lift
- Electronically operated additional controller switchable on joystick
- Depressurised return
- Rear view camera
- Steering column adjustable in length and angle
- Hour meter, rev counter, fuel and temperature indicator
- Adjustable armrest
- Rear weight end plate and towing hitch
- Main battery switch
- 2-stage air cleaner with highly efficient pre-cleaner system
- Tool holder type wheel loader VM with hydraulic tool lock
- Dynamic load moment control according to DIN EN474-3

BUCKETS

SOIL BUCKET HD SMALL

Robust soil bucket for heavy-duty earthworks, perfectly suited for our 1,000 series. The bucket is equipped with overflow protection as standard.



Width	Volume	Weight
0.90 m	0.27 m ³	120 kg
1.00 m	0.29 m ³	134 kg
1.20 m	0.34 m ³	148 kg

SOIL BUCKET SMALL SQUARE

Small soil bucket with square bucket body, perfect for our 1,000 series.



Width	Volume
0.90 m	0.22 m ³
1.00 m	0.24 m ³
1.20 m	0.29 m ³

LIGHT MATERIAL BUCKET SMALL

Small light material bucket with square bucket body, perfect for our 1,000 series.



Width	Volume
0.90 m	0.32 m ³
1.00 m	0.35 m ³
1.20 m	0.39 m ³

SOIL BUCKET SMALL WITH GRAB

Small soil bucket with additional hydraulic grab, perfect for our 1,000 series.



Width
0.90 m / 1.00 m / 1.20 m

WASTE-HANDLING GRAB BUCKET

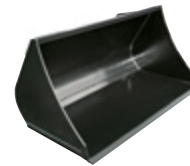
The waste-handling grab bucket is the ideal implement for collecting and handling bulky materials, rubble and wood. The bucket has no sides for easy handling of timber logs.



Width	Volume	Weight
Compact loaders		
1.10 m	462 l	348 kg
1.20 m	504 l	355 kg
1.40 m	588 l	369 kg
1.60 m	672 l	400 kg
Wheel- and telescopic wheel loaders		
1.60 m	672 l	400 kg
1.80 m	756 l	430 kg

SOIL BUCKET ROUND

Strong soil bucket for heavy loads and earthworks, optionally available with ripper prongs, overflow protection and reversible knife.



Soil bucket round for compact loaders

Width	Volume	Weight
Compact loaders		
0.90 m	342 l	110 kg
1.00 m	380 l	120 kg
1.10 m	418 l	130 kg
1.20 m	456 l	140 kg
1.30 m	494 l	150 kg
1.40 m	532 l	160 kg
1.50 m	570 l	170 kg

Soil bucket round for wheel- and telescopic loaders



Width	Volume	Weight
Wheel- and telescopic wheel loaders		
1.60 m	0.76 m ³	231 kg
1.80 m	0.86 m ³	260 kg
2.00 m	0.96 m ³	280 kg
2.20 m	1.06 m ³	330 kg
2.40 m	1.16 m ³	400 kg
2.60 m	1.26 m ³	424 kg

SOIL BUCKET HD

Robust earth bucket for heavy earthworks, with overflow protection as standard, optionally available with ripper teeth, driving protection and reversible blades. Also available as HD+ version with larger volume.



Width	Volume	Weight
Compact loaders		
1.00 m	0.40 m ³	176 kg
1.20 m	0.48 m ³	187 kg
1.30 m	0.52 m ³	198 kg
1.40 m	0.56 m ³	209 kg
1.50 m	0.60 m ³	220 kg
1.60 m	0.64 m ³	231 kg

Width	Volume	Weight
Wheel- and telescopic wheel loaders		
1.40 m	0.56 m ³	227 kg
1.50 m	0.60 m ³	238 kg
1.60 m	0.64 m ³	249 kg
1.70 m	0.68 m ³	260 kg

Width	Volume	Weight
Wheel- and telescopic wheel loaders HD+ (from 5470 Z)		
1.60 m	0.87 m ³	331 kg
1.80 m	0.98 m ³	353 kg
2.00 m	1.03 m ³	375 kg
2.20 m	1.19 m ³	397 kg
2.40 m	1.30 m ³	433 kg

SOIL BUCKET WITH GRAB

The universal insertable tool! Optional available with 600 mm gripper.



Width	Volume	Cylinder	Gripper length
Compact loaders			
0.78 m	273 l	1	475 mm
0.90 m	315 l	1	475 mm
1.00 m	350 l	1	475 mm
1.20 m	420 l	1	475 mm
1.20 m	420 l	2	475 mm
1.40 m	490 l	2	475 mm
1.60 m	560 l	2	475 mm
Wheel- and telescopic wheel loaders			
1.60 m	688 l	2	475 mm
1.80 m	774 l	2	475 mm

SILAGE GRAB BUCKET

This silage grab bucket is perfectly suitable as a multi-purpose bucket for a cost-effective and flexible removal of any type of silage. It can also be used as a multipurpose bucket.



Width	Volume	Weight
Compact loaders		
1.40 m	812 l	393 kg
1.60 m	928 l	472 kg
Wheel- and telescopic wheel loaders		
1.40 m	812 l	393 kg
1.60 m	928 l	472 kg
1.80 m	1,044 l	520 kg
2.00 m	1,160 l	650 kg
2.20 m	1,276 l	670 kg
2.40 m	1,392 l	750 kg

SILAGE GRAB BUCKET XL SIZE

The XL silage grab bucket has an increased volume compared to the standard version. The silage grab bucket has a depth of 113 cm and a height of 99 cm. The opening width is 185 cm.



Width	Volume	Weight
Wheel- and telescopic wheel loaders.		
2.20 m	1,980 l	1.252 kg
2.40 m	2,160 l	1.320 kg
2.60 m	2,340 l	1.405 kg

HIGH VOLUME BUCKET

Universal high volume bucket for wheel loaders and telescopic wheel loaders with a height of 105 cm and a depth of 140 cm. Optionally available with reversible blade and overflow protection.



Width	Volume	Weight
Wheel- and telescopic wheel loaders		
High volume bucket		
2.20 m	1.94 m ³	540 kg
2.40 m	2.11 m ³	559 kg

HIGH VOLUME BUCKET XL

This high volume bucket is ideal for transporting bulk materials with light to medium density. Optionally available with reversible blade and overflow protection.



Width	Volume	Weight
Wheel- and telescopic wheel loaders		
High volume bucket XL		
2.00 m	2.30 m ³	612 kg
2.45 m	3.00 m ³	712 kg
2.60 m	3.20 m ³	761 kg

HIGH TILTING BUCKET

High tilting bucket to boost the dumping height by approximately 1.000 mm. We recommend the use of additional rear weights on the loader.



Width	Volume	Weight
Compact loaders		
1.20 m	495 l	360 kg
1.40 m	590 l	380 kg
1.60 m	680 l	400 kg
Wheel- and telescopic wheel loaders		
1.80 m	1,020 l	595 kg
2.00 m	1,130 l	640 kg
2.20 m	1,250 l	675 kg

4-IN-1 BUCKET

4-in-1 bucket with hardened and tempered prospecting bar and overflow protection. Opens by approximately 670 mm. With ripper tooth and tooth protection as standard.



Width	Volume	Weight	Width	Volume	Weight
Compact loaders, short bucket bottom					
1.10 m	217 l	260 kg	1.40 m	277 l	286 kg
1.25 m	248 l	272 kg	1.65 m	327 l	326 kg
Wheel- and telescopic wheel loaders, long bucket bottom					
1.40 m	406 l	391 kg	2.00 m	580 l	500 kg
1.50 m	435 l	411 kg	2.20 m	638 l	540 kg
1.65 m	478 l	441 kg	2.40 m	696 l	580 kg
1.80 m	522 l	460 kg			
For 5470 Z					
1.95 m	800 l	500 kg			



4-IN-1 BUCKET SMALL

Smaller version of the standard 4-in-1 bucket, perfectly suited for our 1,000 series. With ripper teeth available.

Width	Volume	Weight
1.10 m	0.15 m ³	135 kg

GRAPPLE BUCKET

The gripper bucket with detachable side walls. The bucket has a height of 80 cm and is approx. 85 cm deep. Opening size: 117 cm.



Width	Volume	Weight
0.90 m	0.38 m ³	190 kg
1.00 m	0.42 m ³	200 kg
1.20 m	0.50 m ³	220 kg
1.30 m	0.54 m ³	230 kg
1.40 m	0.59 m ³	240 kg
1.50 m	0.63 m ³	250 kg
1.60 m	0.67 m ³	275 kg
1.80 m	0.75 m ³	305 kg
2.00 m	0.84 m ³	320 kg

GENERAL BUCKET FOR COMPACT LOADERS

General bucket with higher volume than earth bucket for any type of bulk goods, such as grain, artificial fertiliser and rubble. Optionally available with reversible blade and overflow protection.



Width	Volume	Weight
0.90 m	0.43 m ³	145 kg
1.00 m	0.47 m ³	154 kg
1.10 m	0.53 m ³	166 kg
1.20 m	0.59 m ³	174 kg
1.30 m	0.64 m ³	183 kg
1.40 m	0.70 m ³	200 kg
1.50 m	0.75 m ³	210 kg
1.60 m	0.81 m ³	219 kg
HD version		
1.60 m	0.89 m ³	275 kg
1.80 m	1.02 m ³	300 kg



GENERAL BUCKET FOR WHEEL- AND TELESCOPIC WHEEL LOADERS

The general bucket HD is the bucket of choice for all daily operations. The bucket has a height of 81 cm and a depth of 108 cm. Reversible blade and overflow protection are optionally available.



Width	Volume	Weight
1.60 m	0.89 m ³	275 kg
1.80 m	1.02 m ³	300 kg
2.00 m	1.14 m ³	326 kg
2.20 m	1.27 m ³	357 kg
2.40 m	1.40 m ³	385 kg

SCREENING BUCKET

Robust bucket for picking up stones or other materials. Wire distance approx. 60 mm.



Width	Volume	Weight
1.50 m	550 l	330 kg
1.65 m	580 l	360 kg
1.80 m	650 l	400 kg
2.10 m	750 l	450 kg
2.40 m	820 l	480 kg

SCREENING BUCKET SMALL

Lighter version of the standard screening bucket with a wire distance of approx. 40 mm, perfectly suited for our 1,000 series.



Width	Volume	Weight
1.10 m	140 l	115 kg

PALLET FORKS

Also suitable for prongs intended for large-scale bales. The optional frame adds additional safety. Folding tines, hydraulic tine and lateral adjustment as well as further tine lengths optional.



Capacity	Tine length	Width	Weight
Compact loaders			
2.5 t	1.00 m	1.00 m	150 kg
2.5 t	1.00 m	1.20 m	160 kg
2.5 t	1.20 m	1.00 m	180 kg
2.5 t	1.20 m	1.20 m	190 kg
Wheel- and telescopic wheel loaders			
3.5 t	1.00 m	1.40 m	230 kg
3.5 t	1.20 m	1.40 m	250 kg
4.5 t	1.20 m	1.40 m	425 kg

PALLET FORK HD

The low-mounted fork back offers improved visibility of the tines.

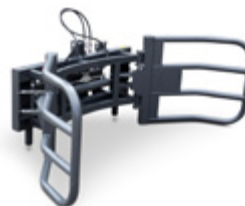


Capacity	Tine length	Width	Weight
Compact loaders			
1.5 t	1.00 m	1.00 m	116 kg
1.5 t	1.20 m	1.00 m	126 kg
2.0 t	1.00 m	1.20 m	170 kg
2.0 t	1.20 m	1.20 m	180 kg
Wheel- and telescopic wheel loaders			
2.0 t	1.00 m	1.20 m	175 kg
2.0 t	1.20 m	1.20 m	185 kg
3.5 t	1.00 m	1.50 m	330 kg
3.5 t	1.20 m	1.50 m	350 kg

FARMING AND HORSE HUSBANDRY

BALE GRIPPER FOR ROUND BALES

This bale gripper can be used to transport or stack round bales quickly and safely. The loader must be equipped with a protective roof or cab.



Capacity	Round bale size	Weight
1,400 kg	900 - 1,800 mm	202 kg

BALE GRIPPER FOR SQUARE BALES

Bale gripper for loading and transporting square bales. The loader must be equipped with a protective roof or cab.



Capacity	Bale size	Weight
1,400 kg	700 - 2,100 mm	310 kg

BALE SPIKE

Bale spike with two or three tines for the transport of a single bale. The loader must be equipped with a protective roof or cab.



Capacity	Bale size	Weight
900 kg	1.20 mm	76 kg

MANURE FORK

Suitable for mucking out. This fork is also available in a heavy duty version.



Width	Prongs	Prong length
Compact loaders		
0.78 m	5	610 / 810 mm
0.90 m	5	810 mm
1.00 m	6	810 mm
1.20 m	7	810 mm
1.40 m	8	810 mm
1.60 m	9	810 mm
Wheel- and telescopic wheel loaders (heavy duty)		
1.60 m	9	1,100 mm
1.80 m	10	1,100 mm
2.00 m	11	1,100 mm

MANURE FORK SMALL WITH GRAB

The manure fork small with grab is ideally suited for the removal and transport of manure, silage, straw and other materials for our 1,000 series. It is equipped with one cylinder.



Width	Prongs	Cyl.	Weight
0.90 m	5	1	115 kg
1.00 m	6	1	130 kg

MANURE FORK WITH GRAB

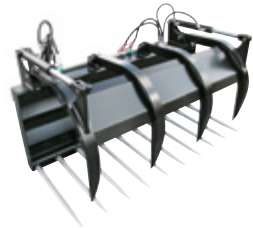
The manure fork with grab is ideally suited for the removal and transport of manure, silage, straw and other materials.



Width	Prongs	Cyl.	Width	Prongs	Cyl.
Compact loaders					
0.78 m	5	1	1.20 m	7	1
0.90 m	5	1	1.40 m	8	2
1.00 m	6	1	1.60 m	9	2
Wheel- and telescopic wheel loaders					
1.60 m	9	2	1.80 m	10	2
Compact loaders. long gripper					
1.00 m	6	2	1.40 m	8	2
1.20 m	7	2	1.60 m	9	2

MANURE FORK WITH GRAB, HEAVY DUTY

Manure fork with reinforced gripper



Width	Prongs	Cyl.	Width	Prongs	Cyl.
Compact loaders					
1.20 m	7	2	1.60 m	9	2
1.40 m	8	2			
Wheel- and telescopic wheel loaders					
1.80 m	10	2	2.20 m	12	2
2.00 m	11	2	2.40 m	13	2

STRAW SPREADER

For bedding, such as chopped straw or saw dust. Also suitable to supply fodder in maize silage units. The loader has to be equipped with a pressure less return.



Total width	Volume	Width bucket border	Weight
Compact loaders			
1.40 m	850 l	1.00 m	380 kg
1.60 m	1,020 l	1.20 m	399 kg
1.80 m	1,200 l	1.40 m	415 kg

AUTOMATED FEED BUCKET FOR CONCENTRATED FEED

The food metering unit for concentrated food is equipped with an internal worm element. As standard, the units feeds out towards the right, a variant with output towards the left is also available. Optional available scraping unit for beet. Required oil quantity: 25 l/min. Mechanical or hydraulic flap on request.



Width	Volume	Weight
Compact loaders		
1.20 m	475 l	230 kg
1.40 m	575 l	250 kg
1.65 m	675 l	300 kg
Wheel- and telescopic wheel loaders		
2.20 m	1,400 l	575 kg



AUTOMATED FEED BUCKET FOR MAIZE SILAGE

Ideal suitable to automate the food supply with maize and chopped grass silage. The chain conveyor/scrapper base can feed out to the left or right, depending on the direction of rotation. The speed is set with the oil quantity/engine speed. Operation requires 1 x DW connection and oil effort of ca. 30 l/min.

Special equipment:

- Rotary tilling unit for maize (illustration). Required oil quantity: 30 l/min.
- Hydraulic controlled output flaps, including selection valves

Model	Height	Width scraper bar	Width	Volume	Weight
FD 100 KB	1,200 mm	1,000 mm	1,060 mm	779 l	260 kg
FD 120 KB	1,200 mm	1,200 mm	1,240 mm	943 l	280 kg
FD 150 KB	1,200 mm	1,500 mm	1,520 mm	1,189 l	350 kg

Additional sizes on request.

Height with rotary cutter for maize: plus 500 mm

Additional weight of the rotary cutter: approx. 120 kg, depending on the size



LARGE-SCALE BALE FORK WITH SUPPORT FRAME

In simple terms, the most suitable unit to transport and stack straw or hay bales. With three prongs as standard. Middle prong can be attached either at the top or the bottom. The supporting frame holds the bale(s). Suitable for round or cuboid bales. It is mandatory to equip the loader with a protection roof or a cabin for work with large-scale bales.

Width	Capacity	Prongs	Weight
1.20 m	1.5 t	3	200 kg



BIG BALE FORK WITH HYDRAULIC FOLDING TINES

This big bale fork comes with hydraulically folding tines and a support frame that can be hydraulically extended by approx. 60 cm. This ensures safe driving on the road and optimum transport of big bales. The loader must be equipped with a protective roof or cab.

Width	Capacity	Tines	Weight
1.80 m	1.6 t	4	250 kg



ROUND BALE PROCESSING UNIT

Evenly process round bales thanks to the ample transmission ratio from oil engine to drive shaft using a roller chain.

Prongs	Tine length	Weight
4	1.00 m	250 kg



FORK FOR BIG BALES XL WITH MECHANICALLY FOLDING TINES

Bale fork with folding tines for safe road travel. Top grapple, hydraulic folding tines and raises available as options.

Width	Capacity	Prongs	Weight
2.00 m	2.5 t	5	200 kg



MUCK BLADE

Muck blade with 40 cm high rubber rail. Effective and preserving.

Width	Weight
Compact loaders	
1.50 m	110 kg
1.80 m	120 kg
2.10 m	130 kg
2.50 m	145 kg

ARENA LEVELLER

The arena leveller is equipped with a hydraulic excavator, trailer coupling, supporting wheel, height-adjustable front prongs, rear prongs, heavy planing device for compressing and a final smoothing. Also available with grid or rubber roller.

Equipped with grid roller



Equipped with rubber roller



Equipped with spring tines



Width	Suitability
1.40 m	
1.60 m	
1.80 m	Mat. geotextile.
2.00 m	sandy ground
2.20 m	

DIRT AND FODDER SCRAPER

This scraper is universal suitable with its hydraulical adjustable working width. Both ends of the rubber scraper can additionally be adjusted mechanically to enable dual application as a dirt scraper or fodder scraper.



Width	Width at 40°	Weight
Compact loaders		
1.80 m	1.40 m	ca. 225 kg
2.20 m	1.71 m	
Wheel- and telescopic wheel loaders		
2.80 m	2.18 m	ca. 380 kg
3.20 m	2.48 m	
Pivot up to 70°		

CUTTING SILAGE GRIPPERS

The cutting silage gripper is optional available with corrugated, notched or smooth front cutter finish. The upper gripper opens by 750 mm (from 1.40 m width) and by 800 mm (up to 1.60 m width).



Width	Volume	Cylinder	Weight
Compact loaders			
0.95 m	600 l	2	450 kg
1.20 m	730 l	2	495 kg
1.40 m	870 l	2	540 kg
Wheel- and telescopic wheel loaders			
1.60 m	1,065 l	2	720 kg
1.80 m	1,210 l	2	750 kg
2.00 m	1,350 l	3	990 kg
2.20 m	1,495 l	3	1,025 kg

MINI STRAW SPREADER

The mini straw spreader is the perfect addition to our 1,000 series for distributing straw in stables. The straw is conveyed to the hydraulic opening roller via a mechanical feed roller. From there, it reaches the blower that can spread up to 10 metres away. A pressureless return, a leakage connection and a 12 V power connection are required on the loader.



Width	Oil power	Weight
1.25 m	ca. 30 l/min	ca. 450 kg

STRAW SPREADER

This bedding machine optimally distributes square and round bales in the stables. The straw bales are conveniently picked up via the loading flap and conveyed to the opening roller via the hydraulically driven scraper floor. From here, the straw reaches the throwing fan with a throwing range of up to 12 meters. A water spraying device is available as an option.



Width	Oil power	Weight
1.70 m	35-60 l/min	900 kg

GREEN AREA MAINTENANCE

BRANCH SAW

The branch saw has 3 large saw blades with a diameter of 60 cm each and cuts branches with a thickness of up to 15 cm. The stable attachment frame allows a hydraulic lateral displacement of up to 1 meter and a stepless side swiveling. Standard with switching valve, therefore only 1 double acting connection necessary. A pressureless return and a locking detent are required at the loader.



Working width	Oil power	Weight
1.75 m	45 l/min	420 kg

HEDGE TRIMMER

The hedge trimmer cuts branches with a branch thickness of up to 5 cm. Thanks to the hydraulic swivel mechanism, the hedge trimmer makes vertical, horizontal or diagonal cuts. The attachment frame is equipped with a mechanical side shift. Including switching valve.



Width	Oil power	Weight
1.50 m	25 l/min	176 kg

HEDGE MULCHER

This hedge mulcher cuts and shreds the material in a single operation. The mulcher has a hydraulic swivel device and mechanical lateral adjustment. 1 DW connection, pressureless return and locking detent required. Maximum branch thickness: 3 cm.



Width	Minimum oil volume	Weight
1.30 m	25 l/min	220 kg

DUAL BLADE MOWER

Cleanly cut grass with the hydraulically driven dual blade mower. The grade of the beam is continuously adjustable, so that the rotary mower can also be inserted on scarps and hedges.

The loader has to be equipped with a pressure free return and an oil cooler.



Width	Oil power	Weight
1.50 m	20 l/min	195 kg
1.90 m	20 l/min	215 kg

ROTARY MOWER

Front-mounted rotary mower to maintain grasslands. Requires a stronger gear pump with a minimum of 22 cm³ and a pressure less return. 3 possible versions: rear discharge, side discharge, mulching.



Width	Oil power	Weight
1.20 m	30 l/min	220 kg
1.50 m	30 l/min	280 kg

FLAIL MOWER SE

This high-quality flail toppler is the ideal equipment for mowing, mulching and clipping. The powerful yet soil-friendly machine suits versatile applications. Also available with collecting tray. Pressure free return necessary; speed control and locking detent recommended.



Width	Minimum oil volume	Weight
1.20 m	25 l/min	210 kg
1.40 m	25 l/min	230 kg
1.60 m	40 l/min	240 kg

SE FLAIL MOWER WITH COLLECTING TRAY

The flail collector is veritable multi talent - the perfect mower and scarifier to cut and collect the material in one operation. The 700 l / 900 l collector is emptied hydraulically for convenient operation. Pressureless return, 2 DW connections required, speed selector and locking detent recommended.



Width	Minimum oil volume	Weight
1.20 m	25 l/min	280 kg
1.60 m	40 l/min	310 kg

FENCE TRIMMER

The fence trimmer cuts around fence or crash barrier posts, freeing them effectively and quickly from overgrown grass and weeds.



Working width	Oil power	Weight
0.95 m	32 l/min	265 kg

FENCE TRIMMER SE

Ideally suited for cutting grass under fences, guardrails or along the road. The spring system ensures that the fence posts or trees are not damaged in the process.



Working width	Oil power	Weight
0.60 m	40 l/min	150 kg

CLEANING

SWEEPING MACHINE

Sweeping machine with dirt catching tank and hydraulic drainage or without tank. On demand also available with snow brush roller (suitable for greenery), water tank with spray nozzles and side-mounted brushes, hydraulic side adjustment (incl. selection valve). Different brush diameters possible: 520 mm / 600 mm / 700 mm



With dirt catching tank and side-mounted brushes



With dirt catching tank, water tank, spray nozzles and side-mounted brushes

With snow brush roller

Without dirt catching tank		
Width	Brush roller	Weight
Compact loaders		
1.50 m	520 mm	340 kg
1.80 m	520 mm	365 kg
Wheel- and telescopic wheel loaders		
2.10 m	520 mm	395 kg
2.40 m	600 mm	435 kg

With dirt catching tank, hydraulic drainage		
Width	Brush roller	Weight
Compact loaders		
1.50 m	520 mm	425 kg
1.80 m	520 mm	450 kg
Wheel- and telescopic wheel loaders		
2.10 m	520 mm	480 kg
2.40 m	600 mm	510 kg

BUCKET SWEEPER

This robust sweeper is a versatile attachment. Featuring a cutting edge, it removes compacted soil from roads and squares and is also the perfect implement for cleaning horse paddocks.



Width	Ø Brushes	Weight
1.50 m	600 mm	419 kg
1.80 m	600 mm	502 kg
2.10 m	750 mm	618 kg
2.40 m	750 mm	706 kg

Optional: Side sweeping brush, water spraying unit, hydraulic opening

PUSH BROOM

This push broom makes your loader a sweeping success. Studded with high-quality plastic bristles, this is the broom of choice when it comes to efficient cleaning of yards, sheds and feed tables. Attachment removal is a doddle thanks to the standard-fit fork couplers. Also, it has stands on either side that provide secure storage and protection to the bristles. Further headstocks optionally available.



Width	Weight
1.60 m	190 kg
2.10 m	240 kg

WEED BRUSH

This powerful weed brush tackles challenging and heavy ground cover. Tilting to either side and lengthwise, the brush head adjusts to any contour and type of terrain and its standard-fit rubber curtain protects the surroundings. For convenient adjustment from the cab, the attachment is available with radio control as an option. Another option is the height-adjustable jockey wheel.



Number of brushes	Weight
22	210 kg

WINTER ROAD MAINTENANCE

SALT SPREADER

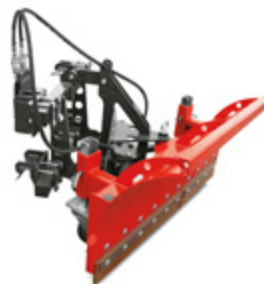
This electrically powered spreader enables to apply grit, such as salt or even fertiliser. The gritting range is between 1.0 m and 8.0 m. Control is convenient via a smartphone (Bluetooth) supplied as standard. Lighting system optionally available.



Volume	Housing	Weight
Compact-, wheel- and telescopic wheel loaders		
120 l	2.5 mm high-grade steel V4A	48 kg
200 l	2.5 mm high-grade steel V4A	56 kg

SNOW PLOUGH BLADE

Snow plough blade with spring-loaded folding mechanism for low to medium snow heights. Hydraulic lateral adjustment as standard.



Width	Height	Clearing width (30°)	Weight
Compact loaders			
1.35 m	0.65 m	1.20 m	195 kg
1.50 m	0.65 m	1.34 m	210 kg
1.80 m	0.80 m	1.60 m	336 kg
2.10 m	0.80 m	1.87 m	366 kg
Wheel- and telescopic wheel loaders			
2.10 m	0.80 m	1.87 m	366 kg
2.40 m	0.80 m	2.14 m	393 kg
2.70 m	0.80 m	2.41 m	421 kg

Option: hydraulic lateral adjustment, limited lights according to German StVZO, warning flag holder, warning flags

SNOW BLADE VARIO

The snow blade Vario is equipped with two swivelling folding wings. Snow clearing is possible in V, Y or diagonal position.



Width	Height	Clearing width (30°)	Weight
1.35 m	0.65 m	1.21 m	185 kg
1.50 m	0.65 m	1.29 m	190 kg
1.80 m	0.65 m	1.55 m	200 kg

SPECIAL APPLICATIONS



DEMOLITION HAMMER

This hydraulic demolition hammer is for breaking up masonry, concrete slabs or asphalt. Standard with 45 mm pointed chisel.

Blows/minute	Oil power	Weight
750-2300/min	16-35 l/min	120 kg

WASTE CONTAINER

With this waste container leaves, waste or green cuttings can be easily collected and then transported away. The waste container has an attachment for pallet forks as standard and can be optimally used in combination with a box turning device.

Top width	Volume	Weight
1.00 m	800 l	110 kg

ADAPTER PLATE

Different versions possible.



WORKING PLATFORM

Specially equipped wheel loaders or telescopic loaders are required for operation as working platforms. Option: Wood guardrail for chain saw operations.

Lifting capacity	Width	Depth	Weight
Telescopic wheel loaders			
250 kg	1.30 m	0.86 m	225 kg



EXCAVATOR ARM

The excavator arm is easy to operate from the cab and is ideally suited for digging narrow trenches or holes. The excavator is equipped with a 250 mm bucket.

Working width	Weight
25 cm	150 kg



TREE STUMP GRINDER

The powerful tree stump grinder removes tree stumps, stumps and rootstocks of all types of woody plants. The cutting teeth are offset and can be rotated 3 times. Loader requirements: Pressure free return and pressure free leakage oil line.

Cutting teeth	Minimum oil volume	Weight
Compact loaders		
12	30 l/min	92 kg
Wheel- and telescopic wheel loaders		
16	50 l/min	250 kg

CONCRETE MIXING BUCKET

The concrete mixing bucket enables optimal mixing of all types of concrete for flexible use. Standard with firmly bolted protective grating, side opening and 1.5 m drain hose. Optionally, other widths are available, e.g. with unloading chute.



Width	Volume	Empty Weight
1.50 m	250 l	415 kg

CONCRETE MIXING BUCKET

The concrete mixing bucket enables optimal mixing of all types of concrete for flexible use. Standard with firmly bolted protective grating, side opening and 1.5 m drain hose. Optionally, other widths are available, e.g. with unloading chute.



Width	Volume	Empty Weight
Compact loaders		
1.05 m	30 l/min	260 kg
1.25 m	30 l/min	285 kg
1.45 m	55 l/min	450 kg



POST HOLE DRILLER

The earth drill offers almost limitless application possibilities: From earth drilling to pile and planting drilling to hole drilling for foundations and masts. Thanks to its robust design with powerful orbital motors, fence construction is also quickly completed.

Minimum oil volume	Weight
30 l/min	131 kg



BOX TURNING EQUIPMENT

Box turning device with lateral folding arm for picking up and emptying boxes, left-turning.

Capacity	Turning range	Weight
1.6 t	0-180°	190 kg

COUPLING PLATE BALL HEAD

With this adapter plate ball head 50 mm with towing eye, trailers can be maneuvered effortlessly on private property.

Weight
30 kg



LEVELLING MACHINE

The laser-controlled levelling machine is an absolute all-rounder for spreading, compacting and levelling on any construction site. Whether for road construction, riding arenas or car parks, with this levelling machine the subsoil is optimally prepared.



Width	Weight
Compact loaders	
1.20 m	475 kg
1.40 m	525 kg
1.60 m	590 kg
1.80 m	640 kg
2.00 m	920 kg



LEVELLING FRAME

With this levelling frame sand or gravel can be optimally smoothed. This makes the surface perfectly prepared for subsequent work, for example for paving work or the riding arena.

Widths
1.60 m / 1.80 m / 2.00 m

DOZER BLADE

Suitable for simple dozer and removal activities. Also possible to push snow at low snow depths on a level surface. With mechanical swivelling unit as standard. Hydraulic swivelling unit, rubber rail or vulcollan strip available at a surcharge.



Width	Height	Weight
Compact loaders		
1.50 m	0.60 m	210 kg
1.80 m	0.60 m	236 kg
Wheel- and telescopic wheel loaders.		
hydr. rotatable		
2.00 m	0.60 m	290 kg
2.20 m	0.60 m	320 kg
2.40 m	0.60 m	350 kg
2.80 m	0.60 m	410 kg



CONTAINER ON WHEELS

This versatile container on wheels collects muck in animal houses as well as green clippings and many further materials outdoors. The large and midmounted flotation wheels have ball bearings for smooth movement and easy pushing of the filled container.

Length	Volume	Weight
2.30 m	2,400 l	214 kg

DUMPSTER BOX

This universal dumpster box for materials such as muck or green clippings has an open front for easy filling with a wheelbarrow. Then the filled box is conveniently transported and unloaded by the loader.



Width	Depth	Weight
1.62 m	1.65 m	165 kg



TRANSPORT BOX SMALL

This transport box makes it easy to transport green waste, tools, bags, equipment and many other items. The flap can be folded up mechanically.

Width	Volume	Weight
1.30 m	0.6 m ³	205 kg



LOGGING GRAB

This logging grab is ideal for transporting and loading tree trunks.

Width	Opening size	Weight
0.80 m	74 cm	150 kg
1.12 m	93 cm	220 kg



GENERAL GRABBER

The general grabber is the ideal helper for transporting pots in nurseries or barrels of all kinds.

Capacity	Opening size	Weight
max. 800 kg	40-120 cm	110 kg



MADE FOR MORE.

Schäffer offers a programme with more than 30 different models, each adapted to your needs. Our loaders' range of operations is versatile: whether in agriculture or construction, gardening and landscaping, industrial and commercial applications, in stabling or warehouse management – Schäffer is always your best choice.

The Schäffer name does not just mean unique product quality. It also stands for safety and optimal service that we guarantee both in Germany, Europe and around the globe.

YOUR DEALER:

0.5/05.26/1WD. Technical changes reserved. Dimensions are approximate. In some cases, illustrations show models and/or attachments with custom designs.